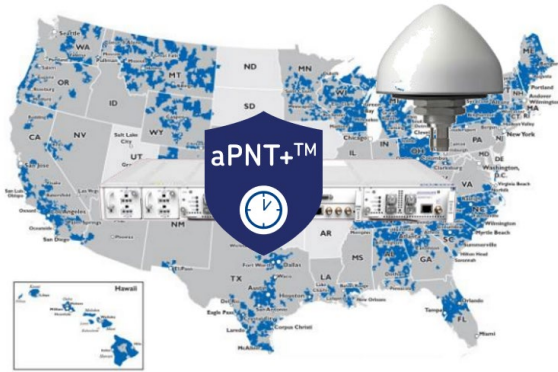
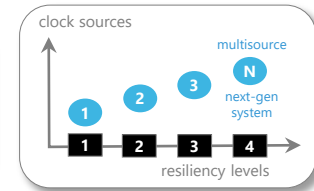


OSA backed by 75 years of know-how in network sync



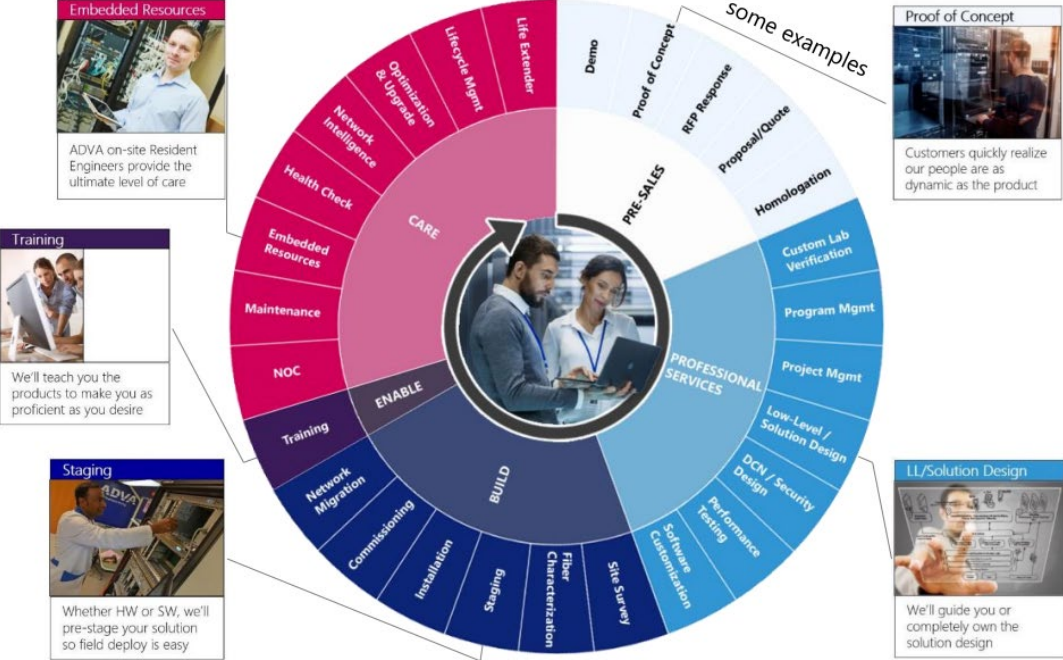
- ✓ **#1** - Industry's first supplier of sync solutions
- ✓ **#1** - The leader in resilient & assured PNT & packet-based timing
- ✓ **#1** - Leading-edge technologies in defense-in-depth PNT cyberthreat protection, including multilayer detection, zero-trust multisource backup & multilevel fault-tolerant mitigation, aligned with these industry standards:



- ✓ **#1** - The leader in field-proven, vendor-agnostic & intelligent sync network management
- ✓ **#1** - Industry's best complete portfolio of trusted sync services, from network design to installation to commissioning

The #1 trusted secure sync solution provider globally

ADVA comprehensive portfolio of turnkey OSA sync services



Serving 5G providers, enterprises, and ICPs for over 2 decades

OSA secure sync product lines by best-fit/cost application

Ensemble Sync Director™ management



accessSync™

OSA 5401 SFP SyncPlug

OSA 5405-I/O/MB/P

OSAinside™

OSA 5400 SyncModule

TimeCard

OSA SoftSync Linux

edgeSync™

OSA 541x

OSA 5412

edgeSync+™

OSA 5420/21

OSA 5422

coreSync™

OSA 5430 NG GM/SSU

OSA 5440 NG GM/SSU

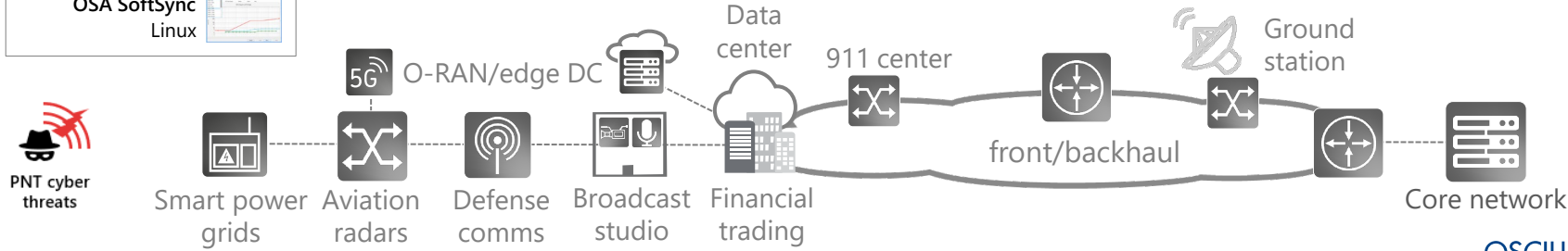
coreSync™

OSA 3300-HP optical Cs

OSA 3350 optical Cs ePRC+

3230B Cs magnetic PRC/ePRC

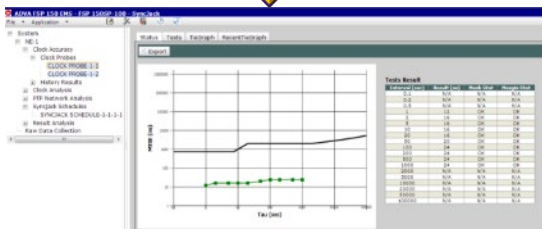
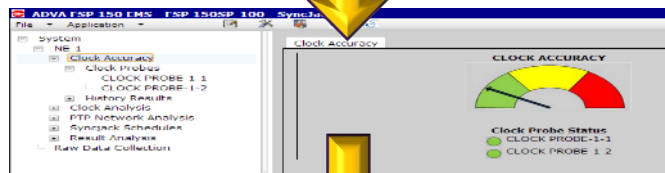
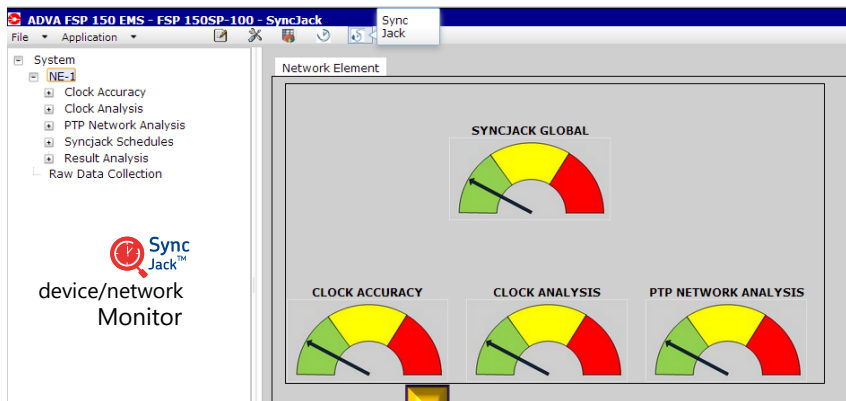
device/network Monitor



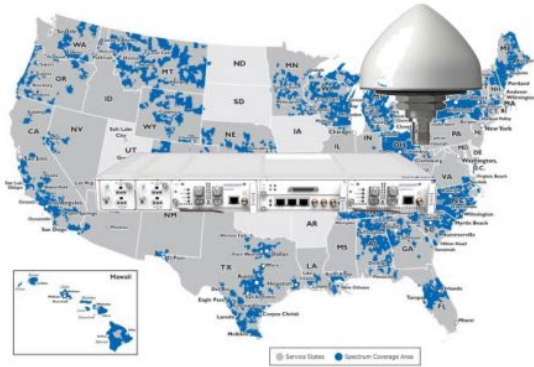
SyncJack monitor integrated into all clock products

GUI Concept

- Several layers of indicators allowing for step-by-step monitoring and troubleshooting
- 1st layer provides global indication of the Synchronization status
- 2nd layer shows performance indication of each reporting tool
- 3rd layer provides detailed information for fault localization of performance analysis



ADVA national rollout of OSA sync devices & antennas



Preparing, Managing, & Turning Up

Program Mgmt	Project Mgmt	Site Survey	Staging/Burn-in	Antenna Installation	Box Installation	Commissioning
A Services Program Manager owns and directs your account	Service Project Managers will drive your national installs	Service Engineers survey sites and advise readiness or actions	Service Engineers stage your gear prior to shipment to field	Service Engineers install antennas, run cables in best practice	Service Engineers install your gear in best practice	Service Engineers turn-up and commission your gear

Training & Supporting in-service

Sync Training	NMS Training	24 x 7 TAC	Software Assure	4-Hour Spares	Box FLM	Antenna FLM
ADVA will train your personnel on function & use of box/antenna	ADVA will train your personnel on function and use of NMS	Services Team cares for your network throughout its life	Software Assure gives peace of mind with constant updates	Spares will be delivered onsite within 4-hour SLA	ADVA field techs will install spare parts and restore service	ADVA field techs will resolve antenna issues and restore service

The # 1 in perfect timing - we design/manage/build/support end-to-end sync networks



Thank you

dburch@adva.com

214-500-4921

IMPORTANT NOTICE

The content of this presentation is strictly confidential. ADVA is the exclusive owner or licensee of the content, material, and information in this presentation. Any reproduction, publication or reprint, in whole or in part, is strictly prohibited. The information in this presentation may not be accurate, complete or up to date, and is provided without warranties or representations of any kind, either express or implied. ADVA shall not be responsible for and disclaims any liability for any loss or damages, including without limitation, direct, indirect, incidental, consequential and special damages, alleged to have been caused by or in connection with using and/or relying on the information contained in this presentation. Copyright © for the entire content of this presentation: ADVA.