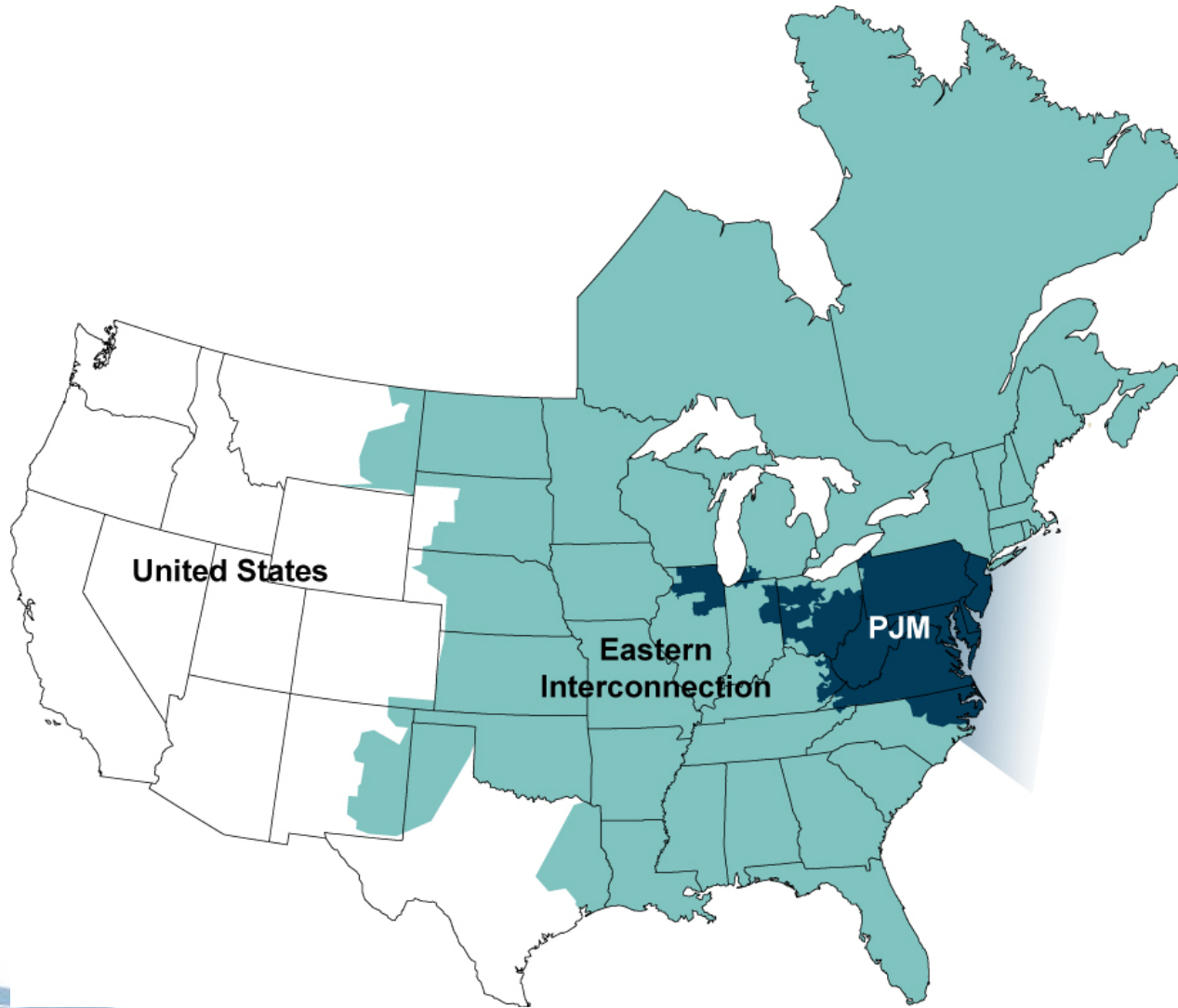


# **Cyber Security Issues for Synchrophasor Implementation**

## **PJM Interconnection**

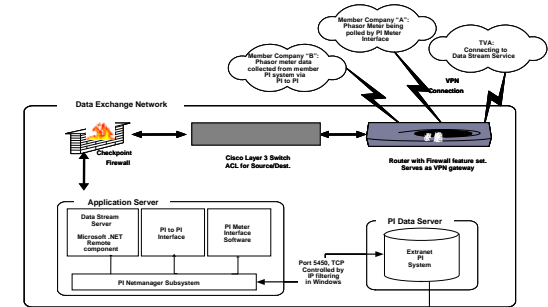
NASPI Working Group Meeting  
Feb. 4-5, 2009  
Scottsdale, AZ



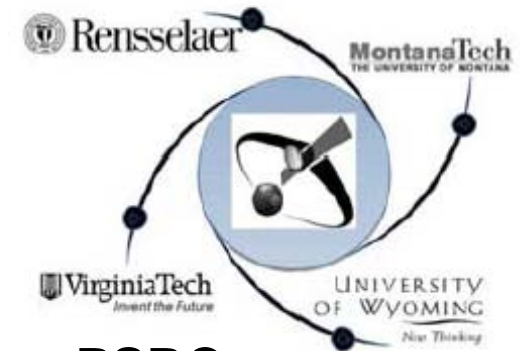
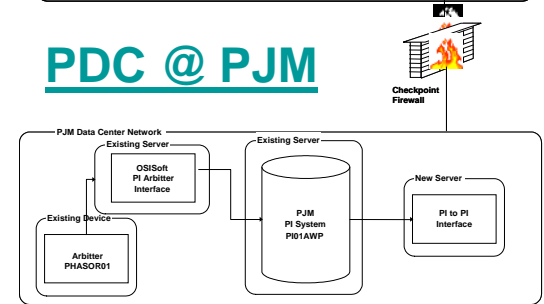


## NASPI North American SynchroPhasor Initiative

### PJM Phasor WG



### PDC @ PJM





**PDC – Not designated a critical asset  
(yet)**

**However, it is treated like one**

**Same is true for all the  
Synchrophasor data collected**

**CIP Standard states –**

**“Entities should interpret and apply standards using reasonable business judgment”**

**What is critical?**

**EMS & State Estimator – Definitely**

**SCADA - Sure**

**RTUs – Yes**

**Data from each RTU - ?**