



ELECTRIC POWER
RESEARCH INSTITUTE

EPRI Roles in Support of NASPI Research and Training

NASPI, New Orleans

March 6, 2008

Stephen Lee

Senior Technical Executive

Kai Sun

Project Manager

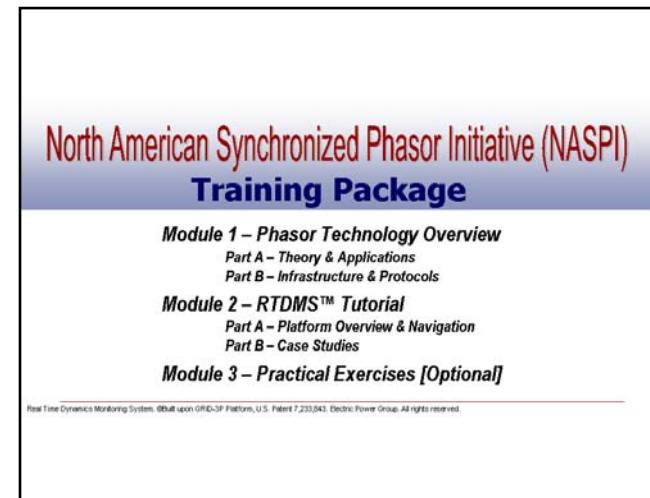
Power Delivery and Utilization

Outline

- Education and Outreach
- Research Projects in Operation and Planning

Education and Outreach

- Support NASPI Webcasts and Training
 - Convert ERLphase TESLA DMEs to PMUs (11/1/07)
 - Tony Weekes, Manitoba Hydro
 - Krish Narendra, ERLPhase
 - 21 organizations, 25 attendees
 - Phasor Technology and RTDMS Training (1/22/08)
 - Terry Bilke, MISO
 - Manu Parashar, Vivek Bhaman, EPG
 - 33 organizations, 59 attendees (several are roomfuls)



NASPI Training Resources Page & Industry Events Page

- <http://www.naspi.org/resources/training/training.stm>
- <http://www.naspi.org/industry/industryevents.stm/>

NASPI North American SynchroPhasor Initiative

NASPI Home | About NASPI | Vision | Organization

NORTH AMERICAN SYNCHROPHASOR INITIATIVE

Training Material

Contact
[Stephen Lee](#)
 (650) 855-2486

Date **Resource**

January 22, 2008 NASPI Training Package Presentation ([PDF 9,875KB](#))

Module 1 - Phasor Technology Overview ([Windows Media Video 8,944KB](#))

 Part A - Theory & Applications (45 min.)

 Part B - Infrastructure & Protocols (15 min.)

Module 2 - RTDMS Tutorial ([Windows Media Video 6,160KB](#))

 Platform Overview & Navigation (60 min.)

Module 3 - Case Studies: (60 min., [Windows Media Video 8,635KB](#))

November 1, 2007 NASPI Web Presentation: Convert NxtPhase Tesla DME's to Phasor Measurement Units ([Windows Media Video 6,000KB](#))

NASPI North American SynchroPhasor Initiative

NASPI Home | About NASPI | Vision | Organization |

NORTH AMERICAN SYNCHROPHASOR INITIATIVE

Industry Events

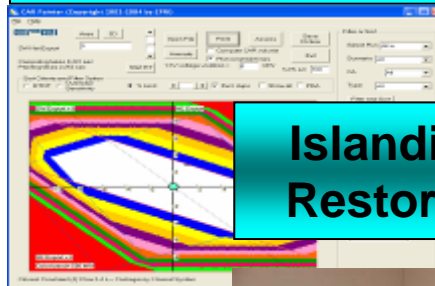
For more information about these events please contact [Stephen Lee](#).

Month	Date	Conference	Location
February	February 12, 2008	NERC RCWG (Reliability Coordinator Working Group)	San Diego, CA
	February 13-14, 2008	NERC ORS (Operating Reliability Subcommittee)	San Diego, CA
	February 13-14, 2008	NERC RAS	Phoenix, AZ
	February 18-22, 2008	EPRI Power Delivery & Markets Advisory Council Meetings	San Diego, CA
	February 20-21, 2008	2008 National Electricity Delivery Forum	Washington, DC
	February 26-28, 2008	NERC SPCTF	San Diego, CA
March	March 6-7, 2008	NASPI Work Group Meeting	New Orleans, LA
	March 12-14, 2008	NERC OC/PC/CIPC	Dallas, TX
April	April 6-9, 2008	2008 International Conference on Electric Utility Deregulation and Restructuring and Power Technologies (DRPT)	Nanjing, China
	April 8-9, 2008	NERC TIS	Salt Lake City, UT
	April 15-17, 2008	NERC SPCTF	Atlanta, GA

EPRI Research Task Forces Relevant to NASPI

- Situational Awareness Task Force
- Online Stability and Control Task Force
- Controlled Separation and System Restoration Task Force
- Modeling and Standardization Task Force
- Reliability Assessment Task Force
- Engineering Study & Economic Assessment Task Force

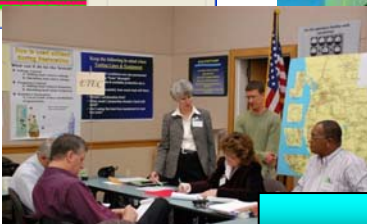
Situational Awareness



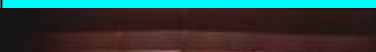
Online Stability & Control



Islanding & Restoration



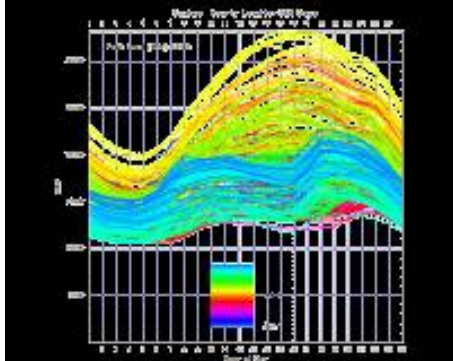
Reliability Assessment



System Studies



Modeling & Standardization



2008 Portfolio – Situational Awareness

- Base Projects
 - P39.001 Alarm Management and Situational Awareness
 - P39.002 Next Generation State Estimation
 - P127.003 Visualization and Prediction of Cascading Outages with Human Factors
- Supplemental Projects
 - Online Risk Monitor for Cascading Outages Incorporating PMUs (Prediction of Cascading Outages)
 - ConEd, NYPA, Entergy, ISONE, Exelon, AEP, FirstEnergy, TriState
 - Wide Area Power System Visualization Using EMS Data
 - CenterPoint
 - Wide Area Power System Visualization and Location of Disturbance Using Real-Time PMU Data
 - ConEd

P39.001 Alarm Management & Situational Awareness

- Scope
 - Alarm root cause diagnosis with MFM (GoalArt)
 - Situation Awareness in Power Systems Operations (SA Technologies)
- Deliverables
 - Technical Updates
 - Workshop(s) on Situational Awareness

Situation Awareness in Power Systems Operations (SA Technologies)

- System Design Guidelines for Supporting Situation Awareness in Power T&D
 - **A. Color Usage Guidelines for Power T&D**
 - **B. Guidelines for Enhancing Situation Awareness of Automated Systems**
 - **C. Guidelines for Supporting Predictive SA**
- SA Technologies will work with 3-4 EPRI members
 - Interview, analyze and draft the initial guideline documents
- One or two EPRI workshops will present the findings, gather more input

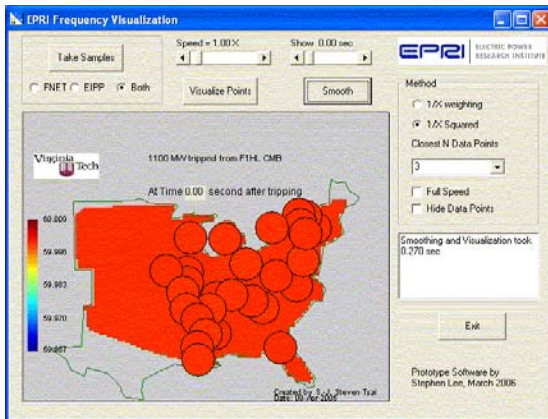
Calendar

- May **27**~29, PSAPO Technical Conference, Situational Awareness Task Force, Southern Co., Atlanta
- October 8th, Situational Awareness Task Force Conference, EPRI Charlotte, NC (followed by NASPI meeting, hosted by EPRI, Oct 9-10) – Guests are welcome

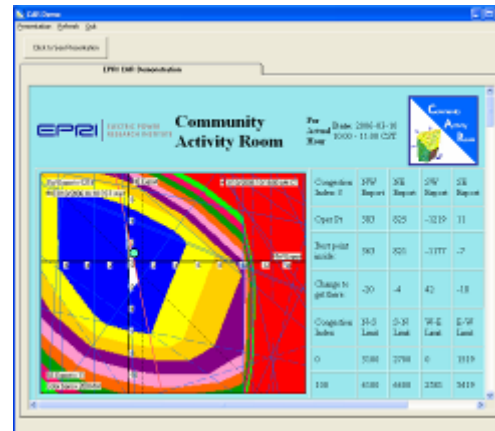
Full Situational Awareness

- Geographical awareness (within and outside own footprint)
- Facilities awareness (loading conditions, etc.)
- Controllability awareness (how much safety margin or elbow room for maneuvering?)
- Predictive awareness (when will problems arise?)
 - Look for CEC (PIER/TRP) report on Critical Operating Constraints Forecasting

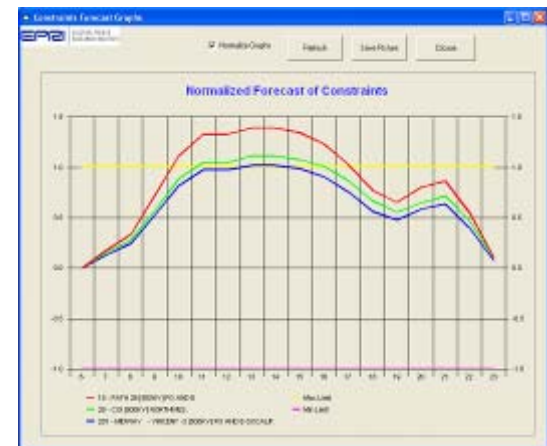
Prototype Visualization of Frequency Location of Disturbance



Community Activity Room Visualizing Transmission Bottleneck

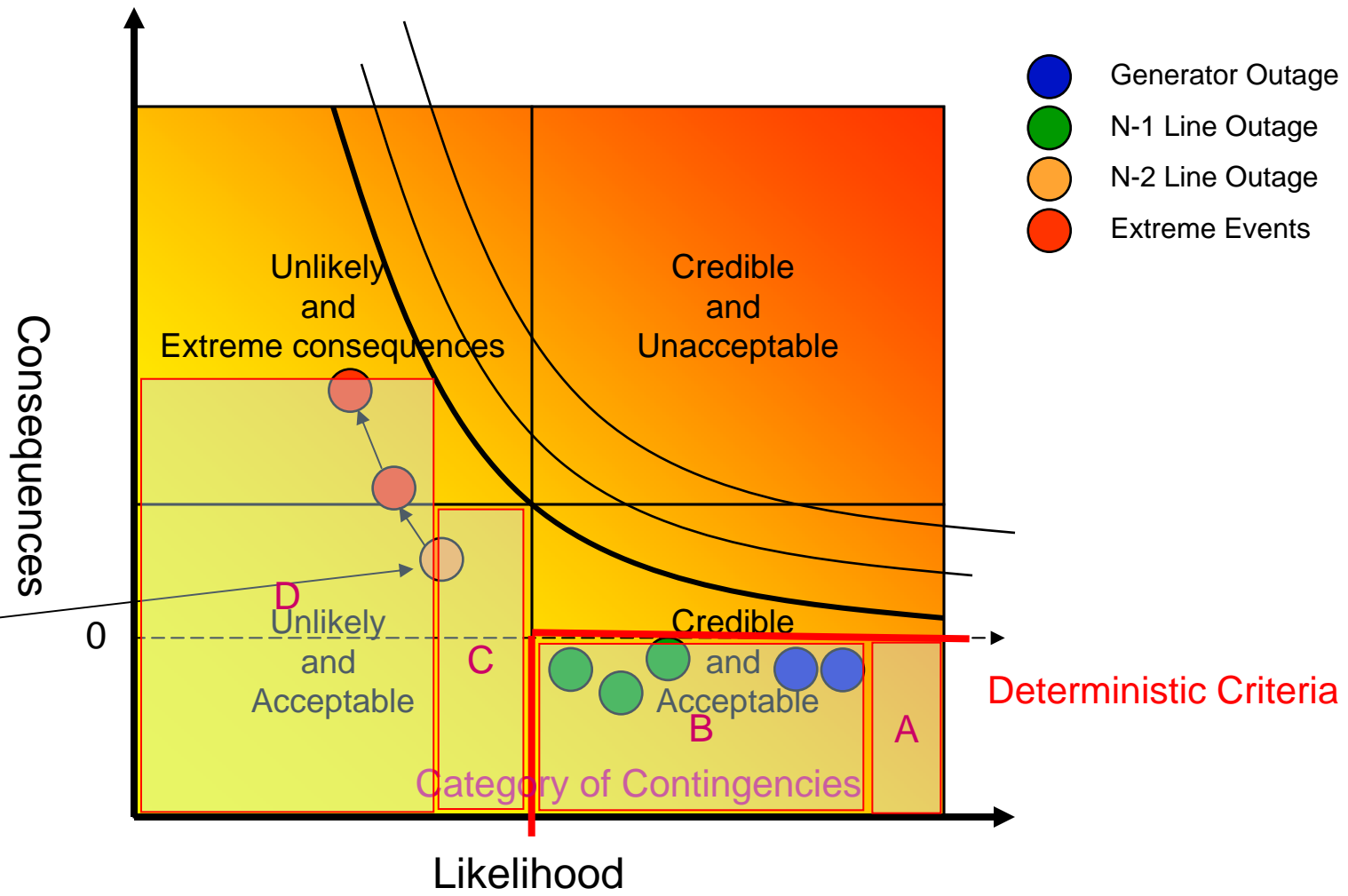


Critical Operating Constraint Forecast Predictive Situational Awareness

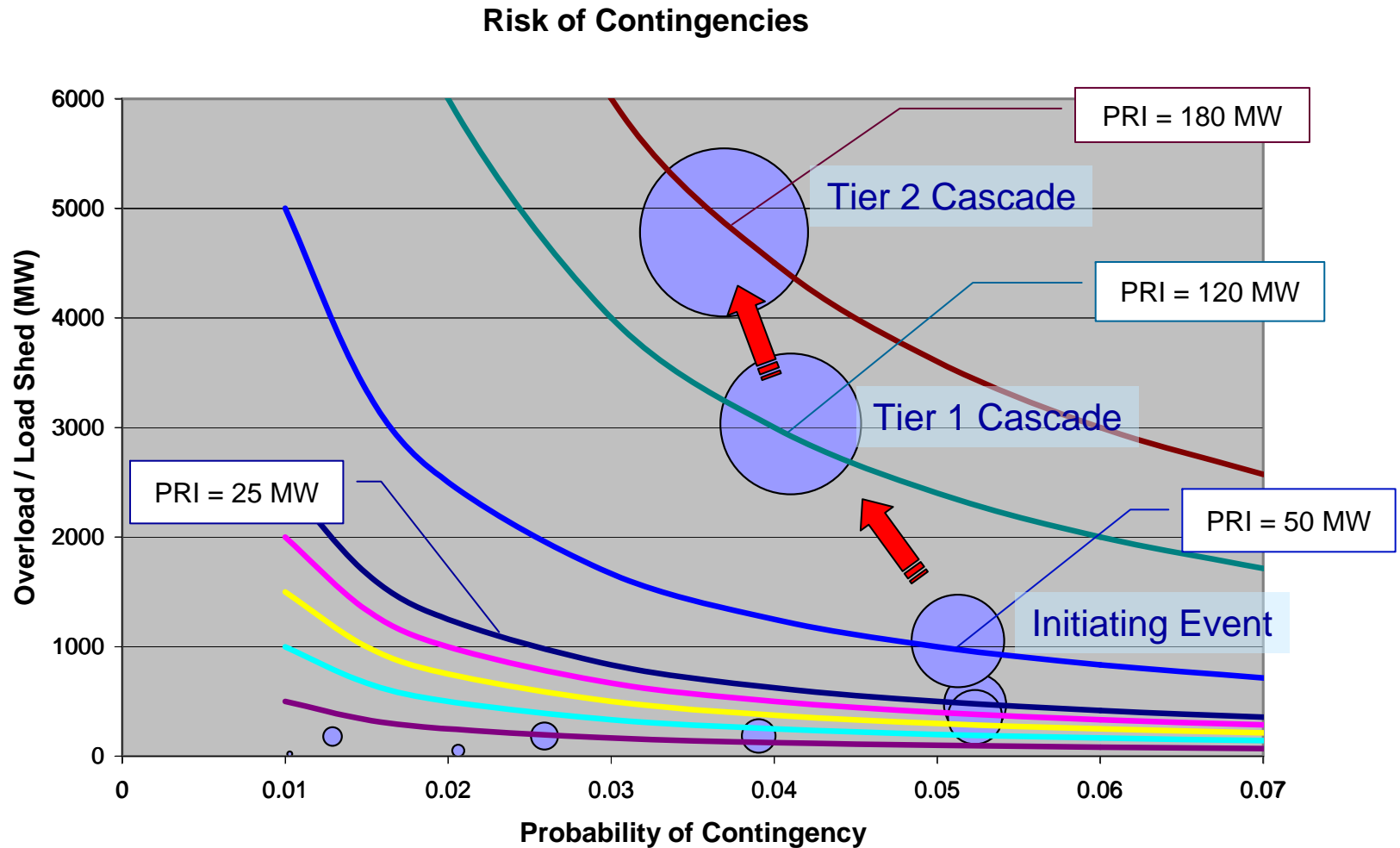


A comprehensive research framework addressing **situational awareness** to improve grid reliability

Online Reliability Monitor of Standard Contingencies & Potential Cascading Modes

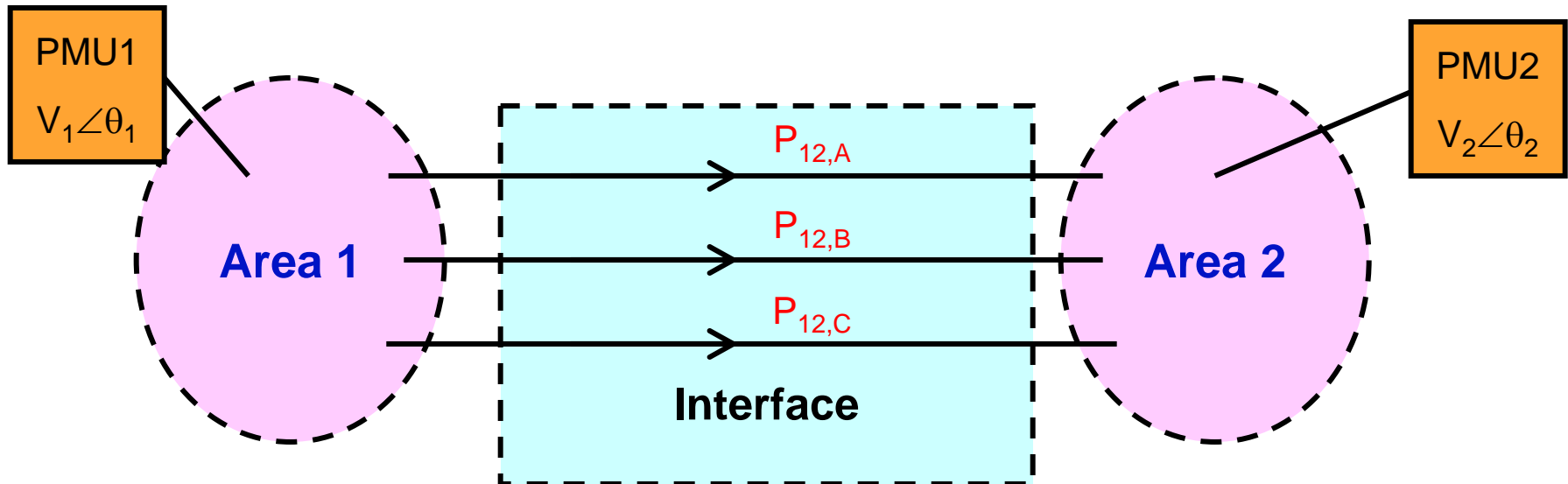


Risk Exposure to One Cascading Mode With 1 Line on Maintenance Outage



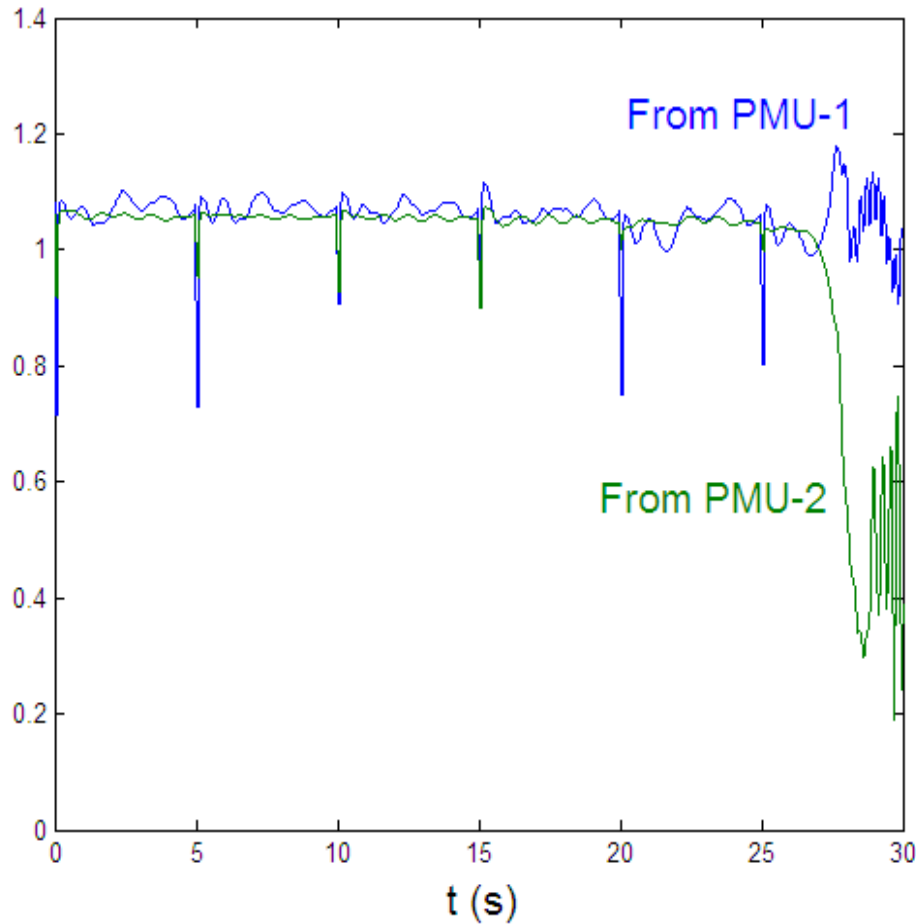
Remaining Storage or Synchronizing Capacity (RSC) of an Interface Computed from PMU

$$RSC = (P_{12} / \sin \theta_{12})(1 + \cos \theta_{12})$$

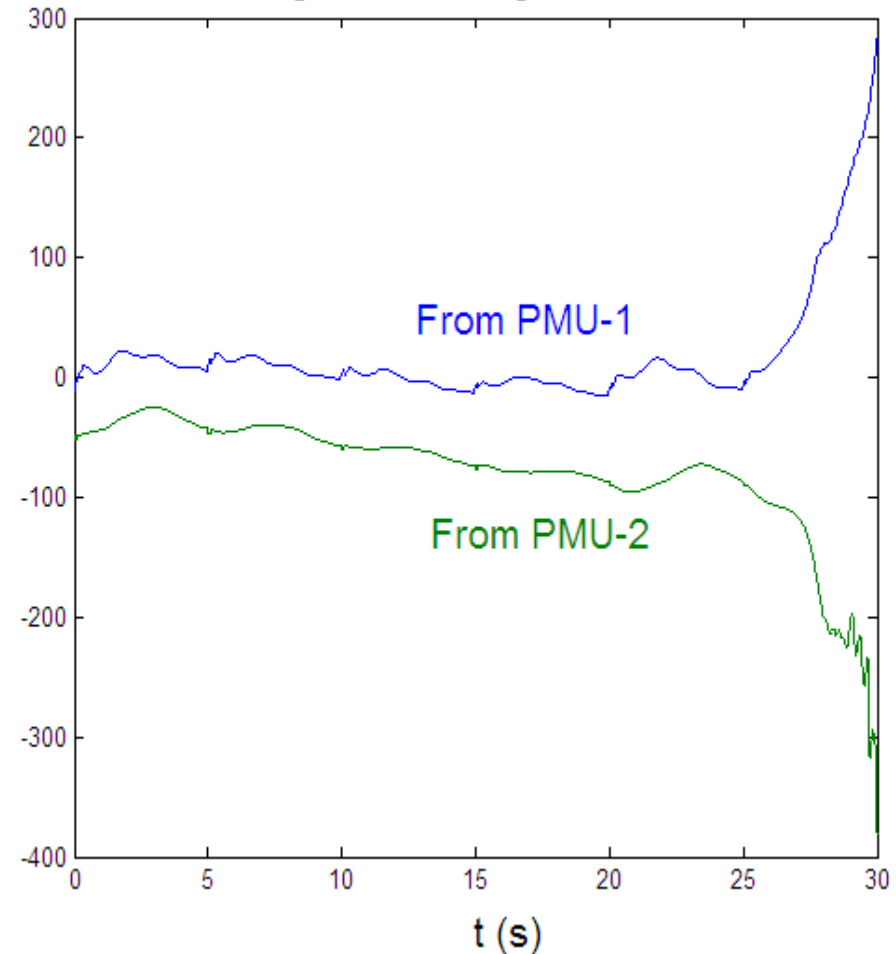


Sequence of Faults with Line Outages

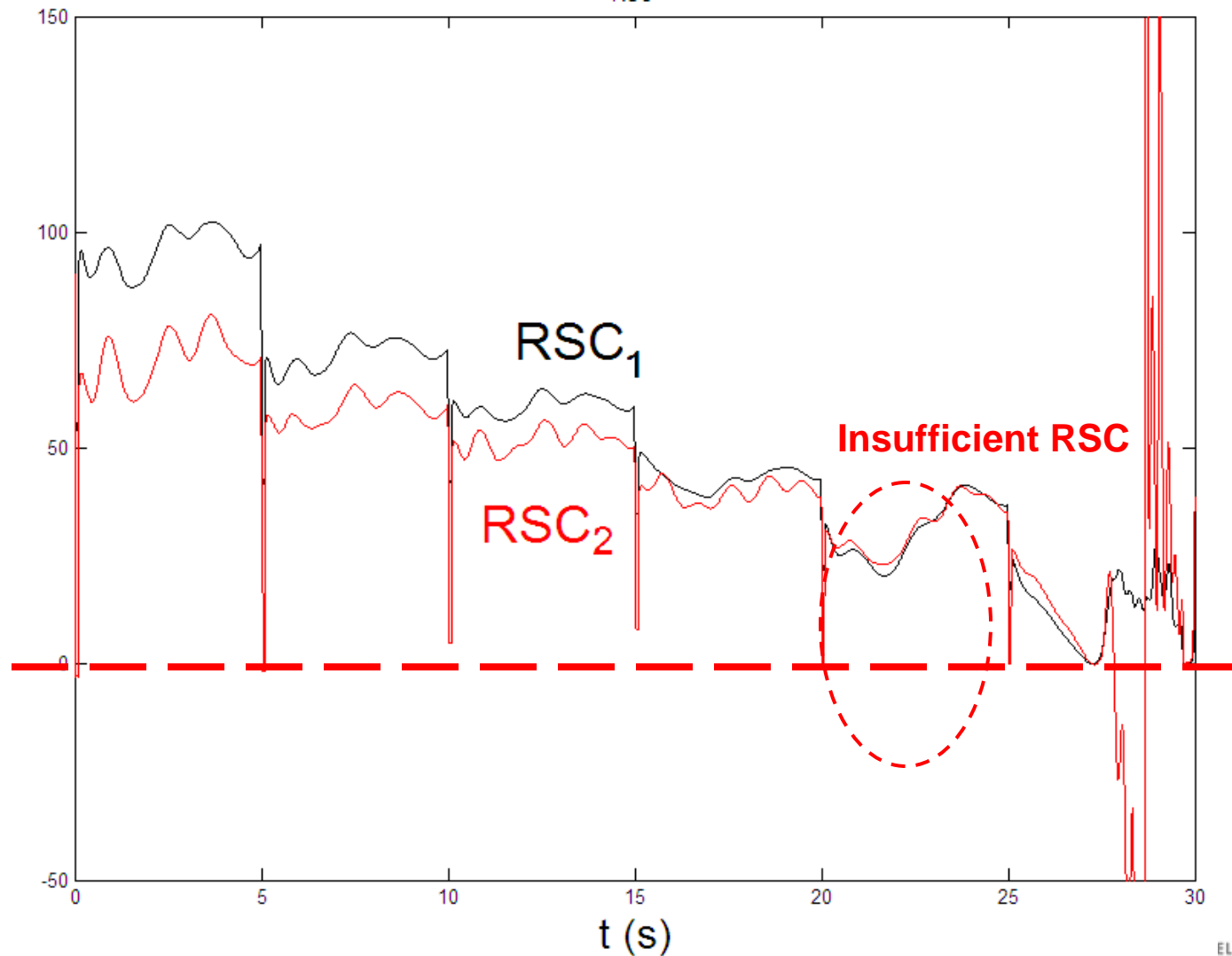
Bus Voltage Magnitude(pu)



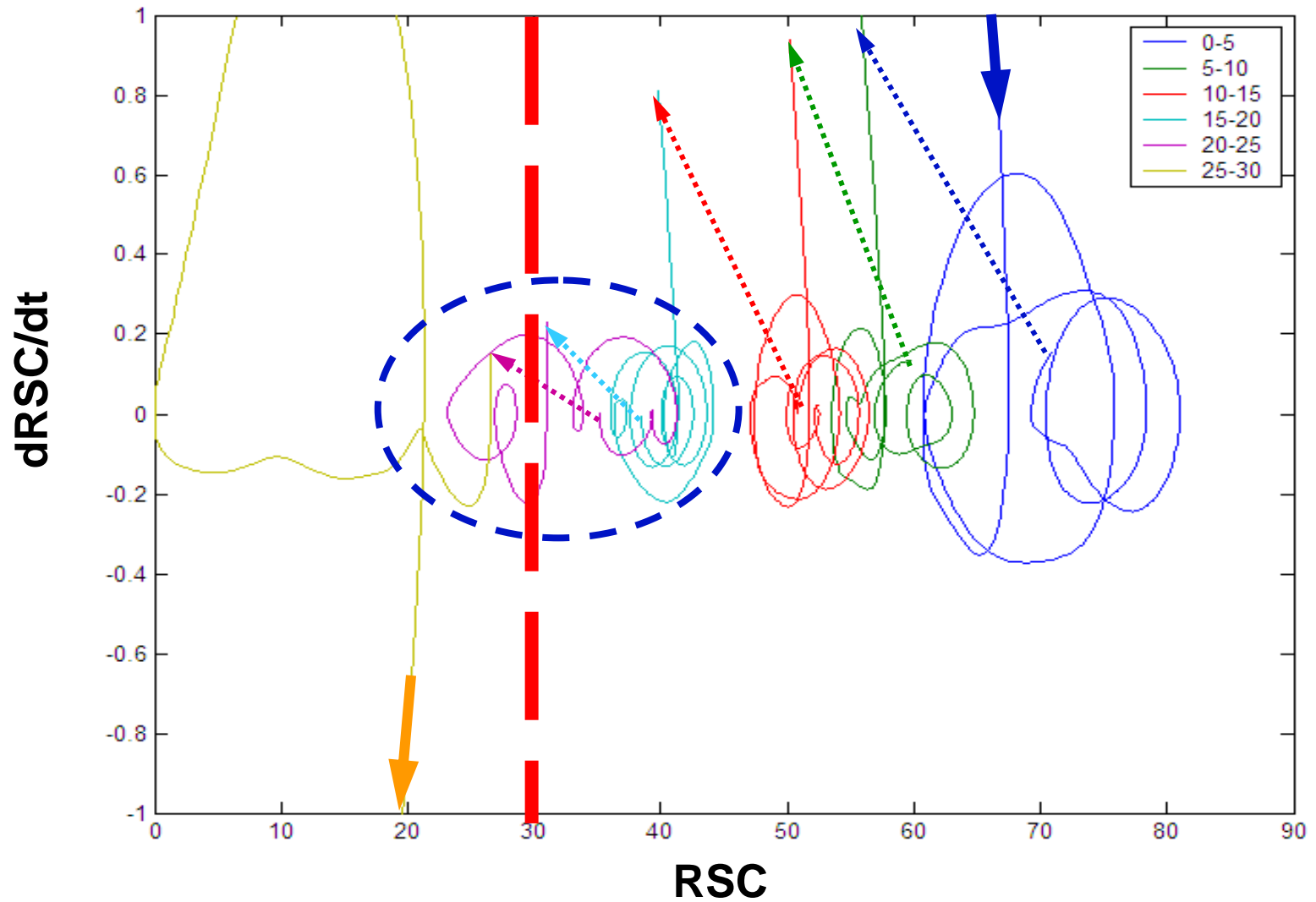
Voltage Phase Angles (Deg.)



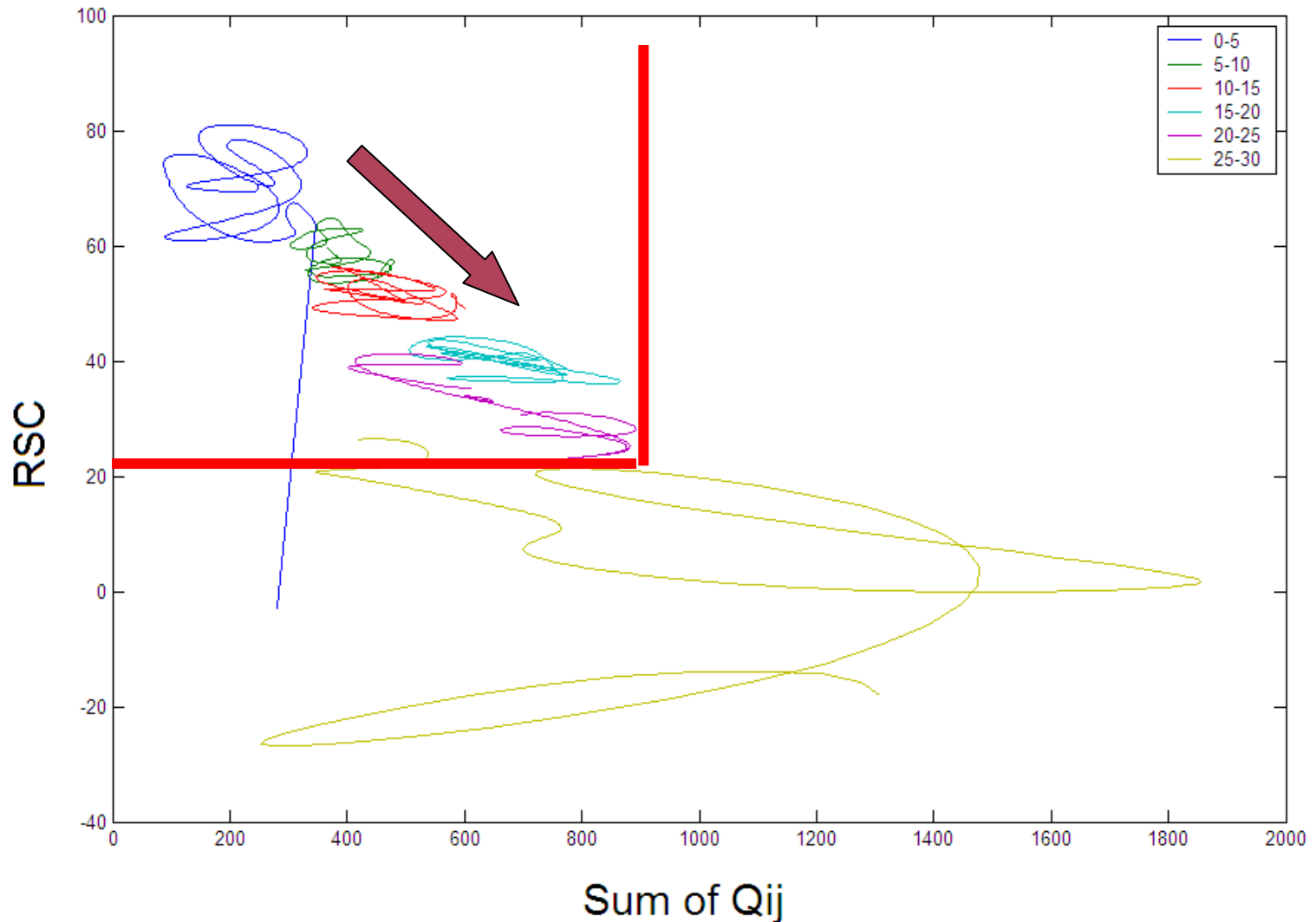
Remaining Storage Capacity



RSC in Phase Space



Combining Reactive Power Flows with RSC



Summary

- Continue to support NASPI training, education and outreach
- October 8th, Situational Awareness Task Force Conference, EPRI Charlotte, NC (the day before NASPI meeting, hosted by EPRI, Oct 9-10) – Guests are welcome
- System Design Guidelines for Supporting Situation Awareness – Workshops in Q4 2008
- Research in Cascading Outages