



WISP

Western Interconnection Synchrophasor Program

Vickie VanZandt
NASPI Work Group Meeting
October 12-13, 2011



Western Electricity Coordinating Council

Assuring reliability in the Western Interconnection

Key Activities

- WECC's "Western Interconnection Synchrophasor Program" is installing more than 300 phasor measurement units (PMUs) and 60 phasor data concentrators (PDCs) across the Western Interconnection.

Aims and Strategies

- Provide grid operators and reliability coordinators with more frequent and time-synchronized system information.
- Better system visibility will help system operators avoid large-scale regional outages, better utilize existing system capacity, and enable greater utilization of intermittent renewable generation resources.

Results and Benefits

- 19 organizations are participating in the project, providing 100% coverage for the Western Interconnection.
- Real-time information and automated controls being deployed will enable grid operators to allow an additional 100 MW of operational capacity on the California-Oregon Intertie (COI). Similar system benefits are possible in other parts of the system.

Transmission System Modernization



Phasor Measurement Unit

Facts & Figures

Total Project Budget:

\$107,780,000

Federal Share:

\$53,890,000

Project Area:

Western Interconnection,
1.8 million square miles

Project Team:

19 utility organizations

Program Participants

- **WECC – Program Awardee**
 - **Program Director:**
 - Linda Perez lperez@wecc.biz
 - **Program Manager:**
 - Vickie VanZandt vrvanzandt@gmail.com
 - **Technical Delivery Manager:**
 - Eric Whitley ericwhitley@wecc.biz
 - **Technical Architect:**
 - Dan Brancaccio dbrancaccio@wecc.biz
 - **Participant Liaison:**
 - Vic Howell vhowell@wecc.biz

Program Participants (cont.)

<u>Cost Share Participants</u>	<u>PMUs</u>	<u>PDCs</u>
○ Bonneville Power Administration	132	4
○ California ISO/CEC	0	2
○ Idaho Power Corporation	4	1
○ NV Energy	14	5
○ Pacific Gas & Electric	158	26
○ PacifiCorp	3	2
○ Salt River Project	21	2
○ Southern California Edison	32	gateways
○ WECC		6
TOTAL	364	48

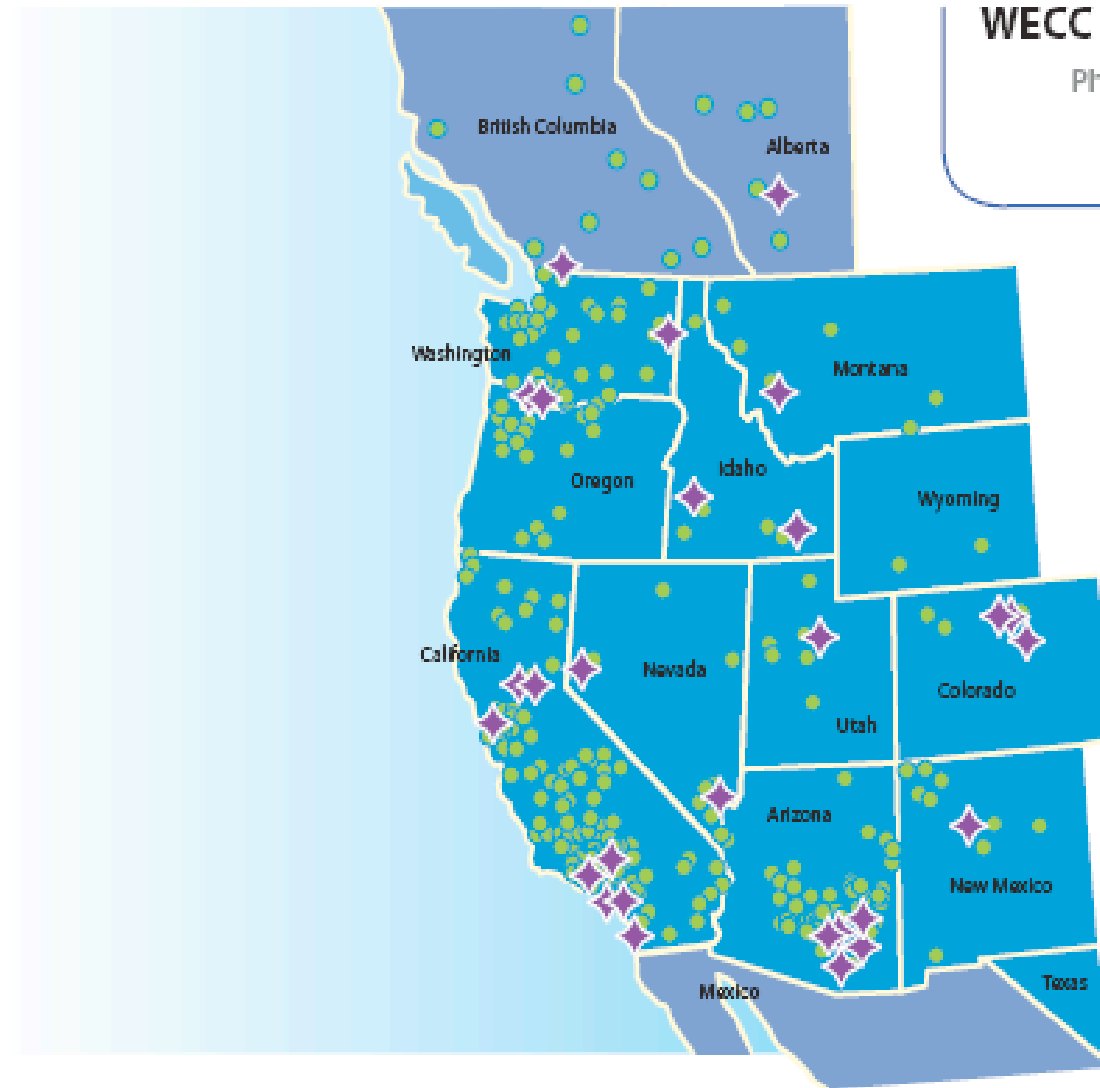


Program Participants (cont.)

<u>10 Additional Participants in WISP</u>	<u>PMUs</u>	<u>PDCs</u>
▪ Alberta Electric System Operator	6	1-2
▪ Arizona Public Service	21	1-2
▪ British Columbia Hydro	9	1-2
▪ Los Angeles Dept of Water & Power	6	1-2
▪ Northwestern Energy	4	1-2
▪ Public Service of New Mexico	4	1-2
▪ San Diego Gas and Electric	16	1-2
▪ Tri-State G&T	1	1-2
▪ Tucson Electric	2	1-2
▪ Western Area Power Admin	6	1-2
TOTAL	75	10-20

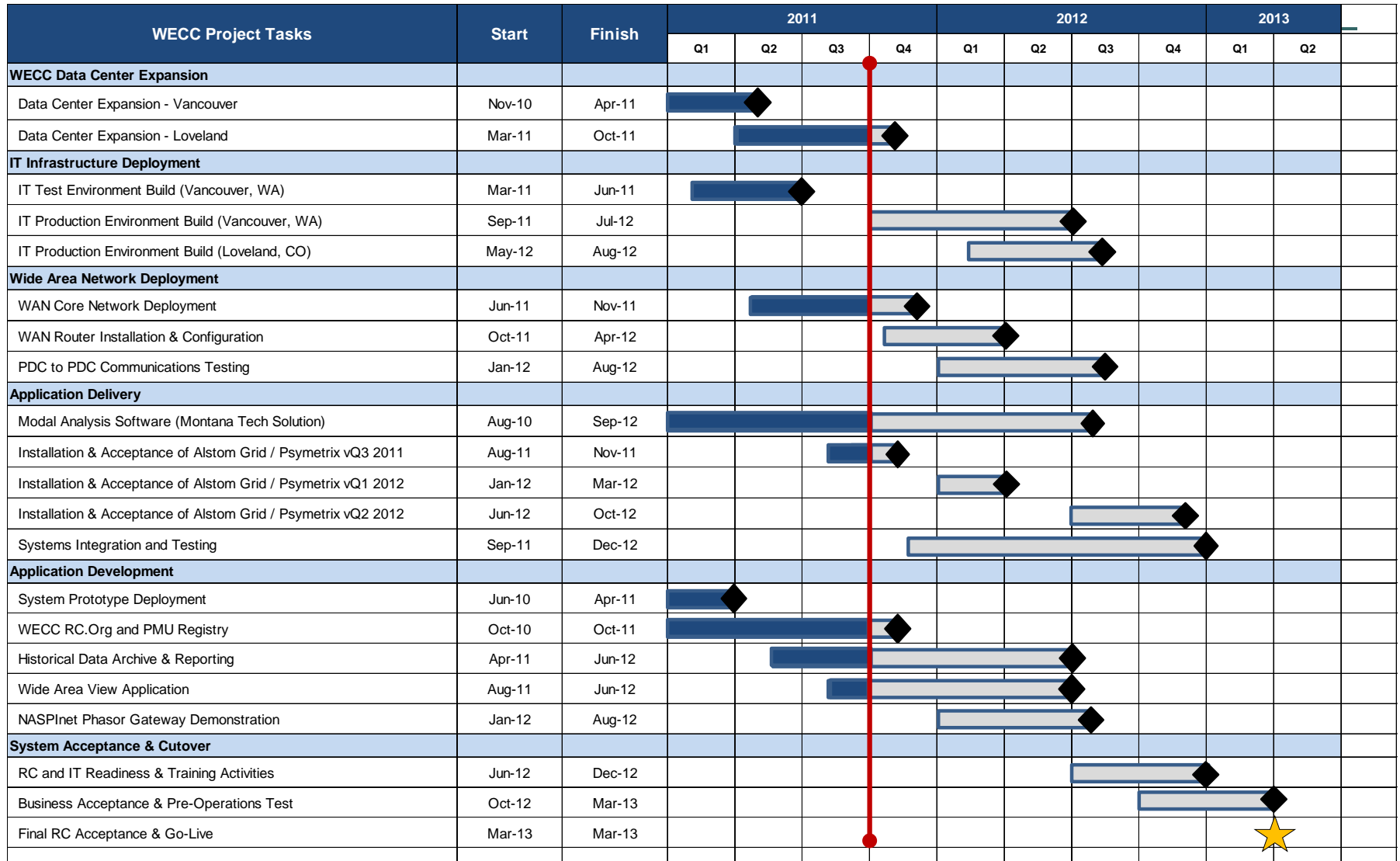
WECC Synchrophasor Infrastructure

Phasor Measurement Units (PMUs) and
Phasor Data Concentrators (PDCs)
in the Western Interconnection



- PMU locations
- PDC locations

WISP Milestone Schedule



PMUs

- 18 Transmission Owners will deploy over 400 PMUs (some outside the WISP grant)
 - Each entity will select its own vendor
- 100% coverage of Western Interconnection
 - Coverage depends on application
- Variety of Types
 - Stand alone
 - DFR
 - Relay-based

PMUs (cont.)

- 244 Substations with PMUs
- Sampling Rate 30-120 sps
- Installation Rate:
 - 2011 Q3 22
 - 2011 EOY 38
 - 2012 EOY 267
 - 2013 Q1 362

PDCs

- RC centers with PDCs 2
- BA/TO control centers with PDCs 21
- Field PDCs 25
- Archive/database
 - Storage duration and capacity:
 - All Data On-Line – 3 months – 20 TB
 - All Data Off-Line – 15 months – 100 TB
 - Disturbances – forever – TBD

Communications

- Dedicated, private Wide Area Network (WAN)
- Provided by Harris Corporation
 - WAN from RCs up to TOs/ISOs edge routers under contract to WECC
 - Centralized management
 - Core Network Deployment: Nov. 2011
 - PDC to PDC Communications Testing: Aug. 2012
- Enables peer-to-peer communication
- Will facilitate NASPInet phasor gateway pilot – Aug. 2012



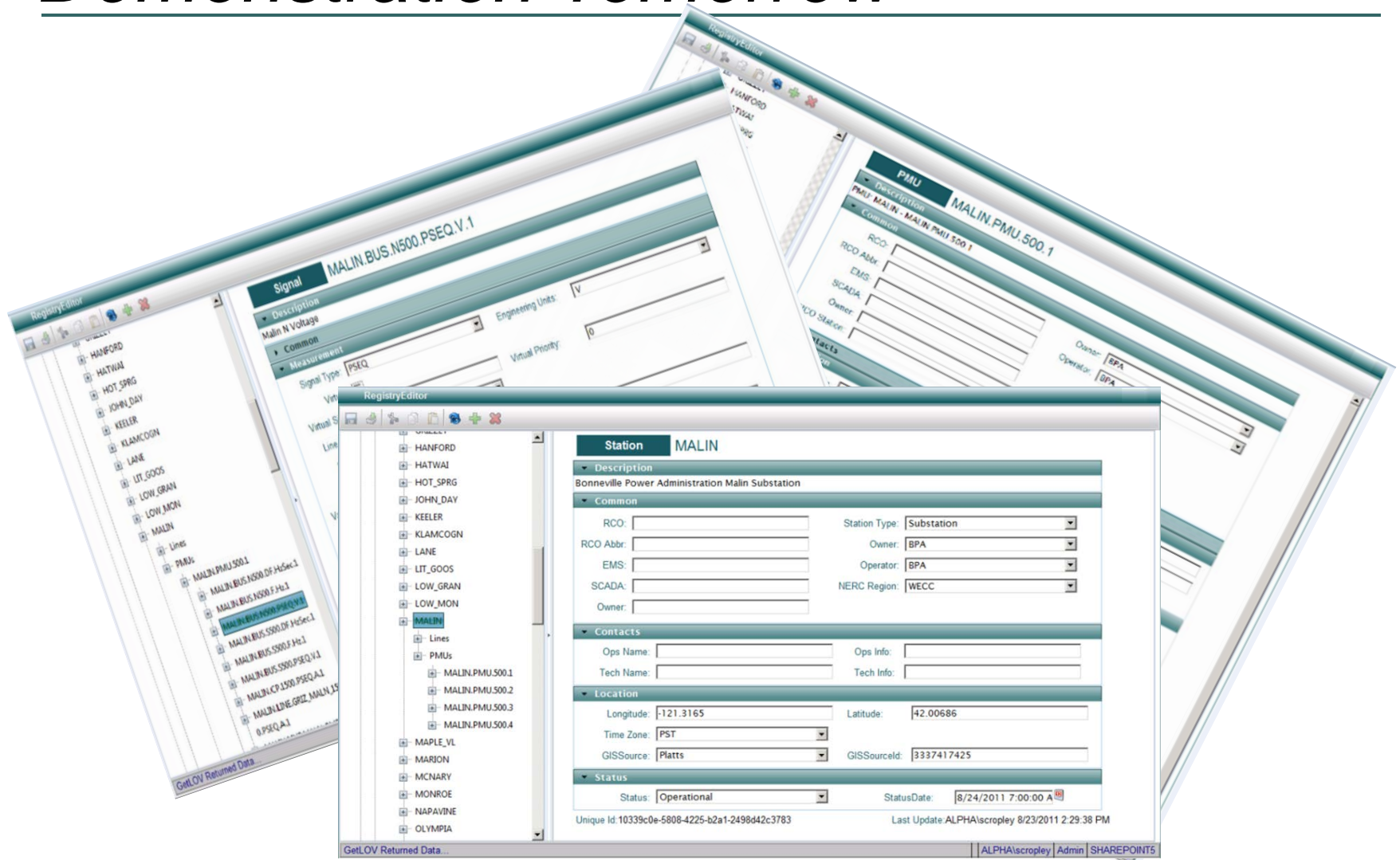
PMU/PDC/Signal Registry & Wide Area View (WAV)

- WECC In-house development: Oct. 2011
- Release 1 complete (Agile development, 8 Sprints).
 - Includes initial release of WECCRC.org.
 - PMU Registry – general application layout and styling completed.
 - PMU Registry device element structure and attributes complete.
 - Network security model complete.

PMU/PDC/Signal Registry & Wide Area View (WAV) – (cont.)

- Release 2 complete (Sprint 9).
 - Includes initial release of WAV, PMU Registry map and tree view.
 - Completed WAV high-level requirements.
 - Technology selection for the WAV user interface is complete.

PMU Registry Demonstration Tomorrow



Major Operational Applications

- Number of TOs/ISOs sharing phasor data: 18
- Wide-Area Situational Awareness: Jun./Oct. 2012
 - Alstom/Psymetrix – General visualization, monitoring, alarming and archiving.
 - Montana Tech/University of Wyoming/PNNL, Psymetrix, Washington State University – Oscillation Monitoring.
 - Vendor selection underway – Voltage Stability.

Major Operational Applications

- Wide Area View: June 2012
 - WECC in-house development – Telerik mapping, Silverlight display.
- Automated Report Generation: June 2012
 - System performance following events.
 - For baselining, model validation, trending.
- Response-Based Controls: BPA – March 2015
 - Fast reactive switching.
 - Primary and total reactive requirements for wind power plants.

Challenges and lessons learned

- Biggest Technical Challenge
 - Data mining tools for information retrieval.
- Biggest Programmatic/Execution Challenges
 - Took much longer than originally expected:
 - Execute agreements among participants.
 - Finalize contracts for infrastructure and applications.
 - Begin infrastructure construction.
 - Need an additional Data Sharing Agreement
 - To protect source data other than synchrophasors for WAV.

Acknowledgement and Disclaimer

- Acknowledgment: This material is based upon work supported by the Department of Energy under Award Number DE-OE0000364.
- Disclaimer: This report was prepared as an account of work sponsored by an agency of the United States Government. Neither the United States Government nor any agency thereof, nor any of their employees, makes any warranty, express or implied, or assumes any legal liability or responsibility for the accuracy, completeness, usefulness of any information, apparatus, product, or process disclosed, or represents that its use would not infringe privately owned rights. Reference herein to any specific commercial product, process, or service by trade name, trademark, manufacturer, or otherwise does not necessarily constitute or imply its endorsement, recommendation, or favoring by the United States Government or any agency thereof. The views and opinions of authors expressed herein do not necessarily state or reflect those of the United States Government or any agency thereof.